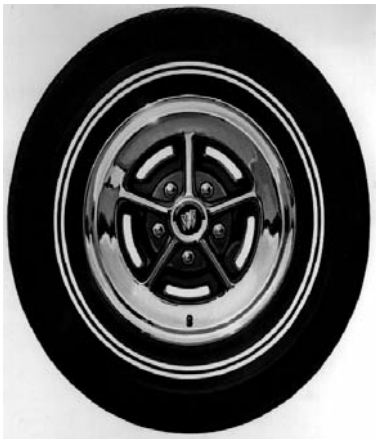


### Chrome Mag Wheels Coming Soon!



### Chrome Wheel Center Caps & Emblems



**1966-1970** Chrome mag wheel caps.  
WC660.....\$39.50 ea.



**1966-1970** LeSabre, Wildcat and Electra wire and mag wheel plastic center emblems. (Tri-shield).  
WP660T .....\$18.00 ea.



**1966-1970** Wildcat wire and mag plastic. (Wildcat).  
WP660W.....\$18.00 ea.



**1966-1970** Mag wheel chrome cap retainer. For wheels with 2 1/8" hole.  
WCR650 .....\$7.00 ea.

**1966-1970** Mag wheel chrome cap retainer. For wheels with 2" hole.  
WCR650S .....\$7.00 ea.

### Wheel Nuts



**1961-1995** Wheel nuts (1/2-20. Standard ).  
**1963-1975:** All as required;  
**1976-1995:** LeSabre and Electra all as required.  
WN610.....\$1.75 ea.

### Solid Stainless Steel Wheel Nuts



**1963-1981** We have reproduced these hard-to-find nuts to look identical to the originals. Of course they are far superior to the originals as they will never rust and feature the durability and strength of stainless steel.

**1963-1981** 1/2"-20 Solid stainless steel.  
**1963-1975:** All;  
**1976-1981:** LeSabre and Electra.  
WN635.....\$6.25 ea.  
WN635S.....( Set of 20 ).....\$96.00 set

**1969-1981** 7/16"-20 Solid Stainless Steel.  
**1969-1975:** Apollo, Century, Regal, Skyhawk;  
**1976-1979:** All except LeSabre and Electra;  
**1980-1981:** All  
WN695.....\$6.25 ea.  
WN695S.....(Set of 20).....\$96.00 set.

### Chrome Wheel Nuts Replacement Stainless Steel Capped



**1963-1981** Wheel nuts (1/2-20. Chrome capped).  
**1963-1975:** All;  
**1976-1981:** LeSabre and Electra.  
WN641.....\$3.00 ea.



**1973-1981** 7/16-20 wheel nuts.  
**1973-1975:** Apollo, Century, Regal and Skylark;  
**1976-1979:** Except LeSabre and Electra;  
**1980-1981:** All.

WN691.....\$3.25 ea.  
WN691S.....(Set of 20).....\$44.25 ea.



**1971-1976** 14" Chrome wheel cap with Tri-shield emblem.  
WC712.....\$39.50 ea.



**1971-1987** Buick LeSabre, Centurion, Electra with chrome wheels with 2" holes. Wheel cap with Tri-Shield for 15" wheels.  
WC715 .....\$43.00 ea.

**1971-1987** Buick LeSabre, Centurion, Electra with chrome wheels with 2-1/8" holes. Wheel cap with Tri-Shield for 15" wheels.  
WC715B.....\$43.00 ea.



**1977-1987** All Chrome Wheels with 3" cap. Tri-shield plastic emblem on black background.  
WC777 .....\$39.50 ea.

# Propeller Shaft (Group 5)

## Driveshaft Center Bearing Support New Manufacture



**1961-1964** All. Driveshaft center bearing support. Almost always oil soaked and in need of replacements and often the cause of vibration. This is an entirely new part made as per original. No Exchange is necessary. Complete with bearing retainer clips. Order DSB611 bearing separately.

BS619 .....\$92.75 ea.



**1965-1968** LeSabre, Wildcat, Electra. Driveshaft center bearing support. Order DSB611 bearing separately.

BS658.....\$64.00 ea.

## 1961-1971 Driveshaft Center Bearing

**1961-1971** All. Driveshaft center bearing.

DSB611 .....\$37.00 ea.

## Driveshaft Universal Joints



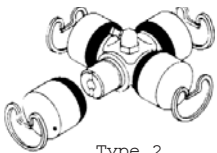
**1961-1975** All. Driveshaft U-joint. Fits front, center and rear as arranged. Saginaw type: 1 1/8" O.D. cap.

UJ574.....\$20.00 ea.



**1961-1963** All. Driveshaft U-joint. All except rear. Spicer type. 1 1/16 od cap. (type2).

UJ573.....\$20.00 ea.



Type 2

**1961-1963** All. Driveshaft U-joint, rear. Spicer type. 1 1/16 O.D. cap (type2).

UJ613R.....\$22.25 ea.

## Constant Velocity Repair Kits

**1961-1965** All. Driveshaft constant velocity repair kits. Saginaw type. Does not include ball.

CVK610 .....\$41.50 ea.

**1966-1968** LeSabre, Wildcat and Electra driveshaft constant velocity repair kit. Does not include ball.

CVK668 .....\$41.50 ea.

**1971-1973** LeSabre and Centurion driveshaft constant velocity repair kits. Rear with out ball.

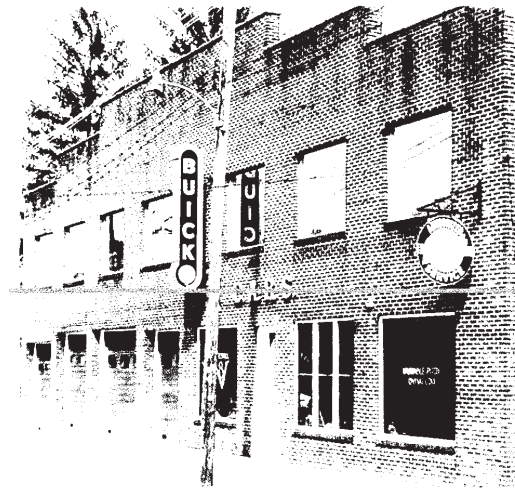
CVK713 .....\$22.25 ea.

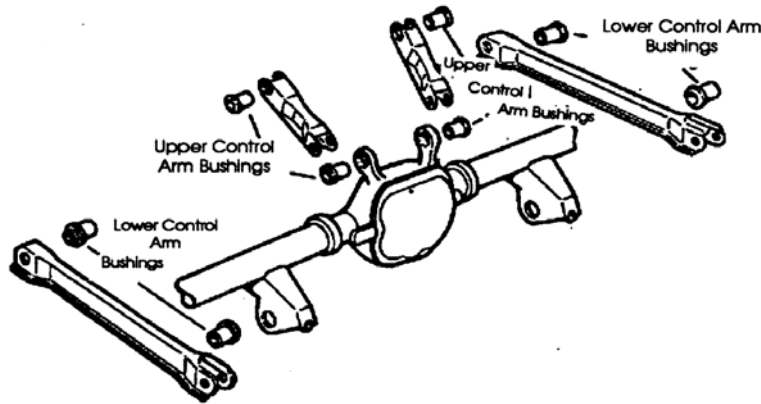
**1971-1976** LeSabre, Centurion and Electra driveshaft constant velocity repair kits. Includes ball.

CVK716 .....\$39.50 ea.

Visit us at our  
Worldwide  
Headquarters

We're located in a small  
village amongst the vast  
farmland in western New  
Jersey





### Rear Axle Control Arm Bushings



**1965-1970** One pair per arm.  
 1965-1970: All upper;  
 1966-1970: All lower.

RAB652 .....\$29.50 pr.  
 RAB6525.....Set of 8 (4 pair).....\$106.50 set

**1971-1988** All upper. Two per car.

RAB716U .....\$29.25 pr.

**1971-1988** All lower. Two per car.

RAB716L .....\$29.50 pr.

**1961-1970** Rear axle radius rod bushing.  
 Two per car.

RRB600 .....\$49.50 set

**1961-1964** Track bar bushing. Buna rubber with metal sleeve.

**1961-1962:** All convertibles and wagons;  
**1963-1964:** All wagons.

RRB604.....\$47.75 pr.



### Rear Axle Parts



**1961-1962** Rear axle pinion bearing (front). (5.447)

PBF562.....\$34.00 ea.

**1961-1962** Rear axle pinion bearing (rear). (5.484)

PBR562 .....\$90.25 ea.



**1961-1962** Rear axle pinion seal (front).

(5.445)  
 PS562 .....\$32.50 ea.



**1963-1964** all;  
**1965 thru 1970** all except LeSabre. Rear axle pinion seal.

PS630 .....\$20.00 ea.

### Rear Axle Carrier Gaskets



**1961-1965**

**1961-1964:** All;

**1965:** Wildcat and Electra.

RCG560.....\$9.00 ea.

### Rear Axle Cover Gasket

**1964-1970** LeSabre - 10 Bolt.

RAG640.....\$8.75 ea.

**1966-1970** All.

RAG660.....\$8.75 ea.

**1971-1975**

**1971-1972:** All with 455 engine;

**1973-1975:** Electra.

RAG715.....\$8.50 ea.

### Rear Axle Posi Traction Tag



All models.

PT635 .....\$5.75 ea.

### Rear Axle Posi-Traction Additive

All years as required. For Posi Rears.  
 Reduces chatter and noise. Genuine GM.

AL300 .....\$11.75 ea.



### Rear Axle Bumpers (5.395)

**1971-1975** All LeSabre, Centurion, Electra, except wagons.

AB715.....\$19.00 pr.

### Rear Axle Backing Plate Gasket (5.819)

**1961-1970:** All. Wildcat, Electra, Except Wagons.  
**1968-1970:** LeSabre.

Rear axle housing to backing plate and between rear wheel bearing. Gasket-shim.

AG562 .....\$4.50 ea.



# Rear Axle (Group 5)

## Rear Wheel Bearings (5.855)



**1961-1962 All.**  
RWB562 .....\$74.50 ea.

**1963-1967**  
**1963-1964:** All;  
**1965-1967:** Wildcat and Electra.  
RWB637 .....\$47.50 ea.

**1965 LeSabre.**  
RWB645 .....\$147.50 ea.



**1966-1967**  
**1966:** LeSabre;  
**1967:** LeSabre 1st type - 2 7/8" diameter.  
RWB667 .....\$103.50 ea.

**1967-1970**  
**1967:** LeSabre 2nd type 3 1/16" diameter;  
**1968-1970:** LeSabre.  
RWB670 .....\$44.50 ea.

**1968-1970** Wildcat and Electra, except wagons.  
RWB680 .....\$54.50 ea.



**1971-1973** LeSabre and Centurion.  
RWB696 .....\$40.75 ea.

## Brake Drums (5.809)

Cast Iron replacements.

(When replacing aluminum front drums - purchase in pairs.)



### Front

**1961-1964** LeSabre, Wildcat, Invicta and Electra.  
BD614F .....\$112.50 ea.

**1965-1970** LeSabre.  
BD650 .....\$109.00 ea.

**1966-1967** Wildcat and Electra.  
BD667 .....\$112.50 ea.

**1968-1970** Wildcat, Electra and Est. Wagon  
BD680 .....\$113.50 ea.

### Rear

**1961-1964** LeSabre, Wildcat, Invicta and Electra.  
BD614 .....\$109.00 ea.

**1965-1970** LeSabre.  
BD650R .....\$109.00 ea.

## Rear Axle Oil Seals (5.822)

**1961-1962 All.**  
OS612 .....\$11.50 ea.



**1963-1970**  
**1963-1967:** All except LeSabre;  
**1968 thru 1970** All except LeSabre and Wagon.  
OS630 .....\$11.00 ea.

**1963-1965** LeSabre.  
OS648 .....\$11.50 ea.



**1966** All LeSabre;  
**1967** LeSabre w/ 2 7/8" bearing.  
OS668 .....\$14.50 ea.

**1967** LeSabre with 3 1/16th wheel bearing;  
**1968 thru 1970** all LeSabre.  
OS670 .....\$11.50 ea.

**1971-1979**  
**1971-1974:** LeSabre, Centurion with 2 9/16" OD seal;

**1975-1979:** All Century, Regal. LeSabre, Electra w/ 2 9/16".  
OS719 .....\$8.50 ea.

**1971-1976** LeSabre, Centurion, Electra, Riviera w/ 2 7/8".  
OS716 .....\$11.50 ea.

**1971-1977** For "B" and "O" axles  
**1971-1975:** Estate Wagon;  
**1971-1976:** Electra with 8.5 ring gear;  
**1976:** Estate wagon with 9.375 gear;  
**1971-1979:** LeSabre, Centurion 8.5 & 9.375 gear.  
OS709 .....\$9.50 ea.



www.oldbuickparts.com  
**908-369-3666**