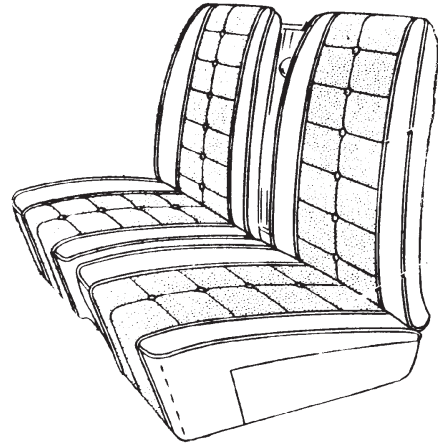


**C**urrently we have kits available for **1963, 1964** and **1965** in vinyl, fabric and leather.

All sets are made with TOP **quality** vinyl, fabric and/or leather with correct grains. All pleats are stitched or "heat sealed" - just like originals. Seat back "inserts" are also made to be identical.



## Upholstery Information

**Full Sets** - consist of both bucket seats and rear seats. We recommend the full set so all colors match. The "FULL SET" does not include the rear side arm rest panel vinyl. This can be ordered separately.

**Individual Seat Parts** - If you're satisfied with our color match after you see our samples, you may order the piece you need.

**Buttons** - You will have to use your original buttons. Extra vinyl is supplied for covering them. An acceptable job can be done using a hair drier for heat and a good "super glue".

**Vinyl** - Only TOP QUALITY - exact grain, many exact original colors. **NO RETURNS due to colors!** We suggest you request samples.

**Leather** - Leather and vinyl were offered in 1963. We also manufacturer sets for 1964 and 1965 - but no returns. We have matched the original colors and suggest you request samples.

**Fabric** - Fabric and vinyl were offered from **1963 through 1965**. Most colors are a close match. We suggest you request samples.

**Free Color Samples** - Call or write stating year, model and color(s) you would like. Samples are sent FREE. Please note: vinyls many not be exact. Some vinyls used with fabrics are not exact matches so suggest you request both samples and decide. **NO RETURN** because you did not see a sample.

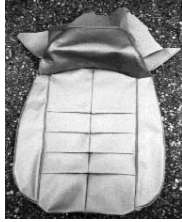
At this time we do not manufacture door panels, but we can supply vinyl and carpet for them.

## 1963 Upholstery (Group 14)

---



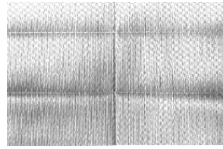
Front Bucket  
Seat Top



Front Bucket  
Seat Bottom



Rear of Front  
Bucket Seat



Insert



Rear Seat Top



Rear Seat Bottom

## 1964 and 1965 (Standard) Upholstery

---



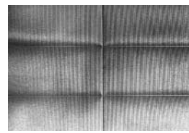
Front Bucket  
Seat Top



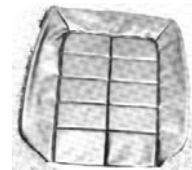
Front Bucket  
Seat Bottom



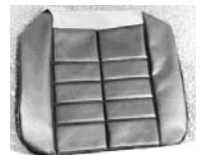
1965 (Standard)  
Rear of Bucket  
(Pleats on  
"plain" vinyl)



1964 Rear Insert  
(Pleats on fine  
vertical lines)



Rear Seat Top



Rear Seat  
Bottom

## 1965 "Deluxe" Interior

---



Front Bucket  
Seat Top



Rear of Front Bucket  
(Vertical pleats on  
"plain" vinyl)



Front Bucket Bottom  
Carpet Included



Ask about Accessory  
Rear Arm Rest

# 1963-1965 Upholstery

## Full Vinyl Sets

Includes both bucket seats and rear seat. All vinyl. Order rear arm rest panels separately. **EXTRA Vinyl Material** is available by the yard. This is the same material used in our seat kits. It comes 52"-54" wide. Sold in FULL yards only. Order by color code. See page 52.

<b>1963 - Vinyl.....SCR3.....\$629.50 set</b>
<b>1964 - Vinyl.....SCR4.....\$629.50 set</b>
<b>1965 - Standard - Vinyl.....SCR5.....\$629.50 set</b>
<b>1965 - Custom - Vinyl.....SCR5C.....\$912.00 set</b>

Order Color By Code See page 52	1963	1964	1965	
			Standard	Custom
Bucket Seat Top Left (drivers) Right	\$123.20 ea. SCR31 SCR32	\$119.90 ea. SCR41 SCR42	\$119.90 ea. SCR51 SCR52	\$199.50 ea. SCR51C SCR52C
Bucket Seat Bottom Left Right	\$87.73 ea. SCR33 SCR34	\$87.73 ea. SCR43 SCR44	\$82.23 ea. SCR53 SCR54	\$109.50 ea. SCR53C SCR54C
Rear Seat Top Left Right	\$78.93 ea. SCR35 SCR36	\$78.93ea. SCR45 SCR46	\$82.23 ea. SCR55 SCR56	\$162.80 ea. SCR55C SCR56C
Rear Seat Bottom Left Right	\$78.93 ea. SCR37 SCR38	\$78.93 ea. SCR47 SCR48	\$82.23 ea. SCR57 SCR58	\$96.53 ea. SCR57C SCR58C
Rear Arm Rest Panel Vinyl Sold as a set of L and R only. Order one get both. Instructions included.	\$76.73 set SCR39	\$76.73 set SCR49	\$76.73 set SCR59	\$76.73 set SCR59C

## Full Fabric Sets

Includes both bucket seats and rear seats. Fabric and vinyl. Order rear arm rest panels separately below. **EXTRA Fabric** is available by the yard. It comes 56" wide. Sold in Full yards only. Please order by color code. See page 52.

<b>1963 - Fabric &amp; Vinyl.....SCR109.....\$799.50 set</b>
<b>1964 - Fabric &amp; Vinyl.....SCR110.....\$799.50 set</b>
<b>1965 - Fabric &amp; Vinyl.....SCR111.....\$1099.50 set</b>

VMR137.....\$130.00 per yard x 56"

Order Color By Code See page 52	1963	1964	1965	
	Fabric	Fabric	Fabric Custom	
Bucket Seat Top Left (drivers) Right	\$179.58 ea. SCR112 SCR113	\$193.88 ea. SCR120 SCR121	\$223.30 ea. SCR128 SCR129	
Bucket Seat Bottom Left Right	\$117.70 ea. SCR114 SCR115	\$119.90 ea. SCR122 SCR123	\$136.40 ea. SCR130 SCR131	
Rear Seat Top Left Right	\$106.70 ea. SCR116 SCR117	\$110.00 ea. SCR124 SCR125	\$163.90 ea. SCR132 SCR133	
Rear Seat Bottom Left Right	\$106.70 ea. SCR118 SCR119	\$110.00 ea. SCR126 SCR127	\$119.90 ea. SCR134 SCR135	
Rear Arm Rest Panel Vinyl Sold as a set of L and R only Instructions included.	\$76.73 set SCR39	\$76.73 set SCR49	\$76.73 set SCR59	

## Full Leather Sets - (14.880)

Includes both bucket seats and rear seat (leather and vinyl). Order rear arm rest panels separately below. Order Color by code listed.

**1963.....LMR100.....\$1365.00 set**  
**1964-1965 Standard....LMR100-4....\$1365.00 set**  
**1965 Custom.....LMR297.....\$1950.00 set**

**Extra Leather** - Price per square foot. We need to know the shape you need. For example 1 x 4 or 2 x 2.

**LMR136.....\$22.75 sq. ft.**

Order Color by Code	1963
Bucket Seat Top Left (drivers) Right	\$245.03 ea. SCR101 SCR102
Bucket Seat Bottom Left Right	\$183.98 ea. SCR103 SCR104
Rear Seat Top Left Right	\$183.98 ea. SCR105 SCR106
Rear Seat Bottom Left Right	\$183.98 ea. SCR107 SCR108
Rear Arm Rest Panel Vinyl Rear Arm Rest Panel Leather	SCR39 \$76.73 set SCR39RL \$178.48 set

## 1963-1965 Riviera Upholstery Colors and Codes

### 1963 Vinyl

#### Codes ( )

Light Blue .....(HLE) Trim #716  
 Silver .....(HVE) Trim #726  
 Sandalwood .....(HZE) Trim #736

### 1963 Fabric and Vinyl

#### Fabric Codes ( )

Blue .....(FHE) Trim #717  
 Black .....(FBE) Trim #787  
 Sandalwood .....(FWE) Trim #737  
 Gray (not original) .....(FGE)

#### Vinyl Codes ( )

Blue .....(HDE)  
 Black .....(HBE)  
 Sandalwood .....(HZE)  
 Gray (not original) .....(HGE)

### 1963 Leather and Vinyl

#### Leather Codes ( )

Black .....(LBE) Trim #788  
 Red .....(LRE) Trim #778  
 White .....(LWE) Trim #748  
 Saddle .....(LAE) Trim #798  
 Dark Blue .....(LDE) Trim #718  
 Silver .....(LLE) Trim #728

#### Vinyl Codes ( )

Black .....(HBE) Trim #788  
 Red .....(HRE) Trim #778  
 White .....(HWE) Trim #748  
 Saddle .....(HAE) Trim #798  
 Dark Blue .....(HYE) Trim #718  
 Silver .....(HVE) Trim #728

### 1964 Vinyl

#### Codes ( )

Blue .....(HLE) Trim #601  
 Silver .....(HVE) Trim #602  
 Fawn .....(HFE) Trim #603  
 Red .....(HRE) Trim #607  
 Black .....(HBE) Trim #608 & 628  
 Dark Blue .....(HTE) Trim #621  
 White .....(HWE) Trim #624  
 Saddle .....(HAE) Trim #629

### 1964 Fabric and Vinyl

#### Fabric Codes ( )

Green .....(FJE) Trim #610  
 Blue .....(FCE) Trim #611  
 Fawn .....(FFE) Trim #613

### 1965 Vinyl

#### Codes ( )

Blue .....(HLL) Trim #601  
 White .....(HWL) Trim #604  
 Black .....(HBL) Trim #608  
 Saddle .....(HAL) Trim #609  
 Green .....(HGL) Trim #620  
 Black .....(HBL) Trim #628  
 Saddle .....(HAL) Trim #629

### 1965 Fabric and Vinyl

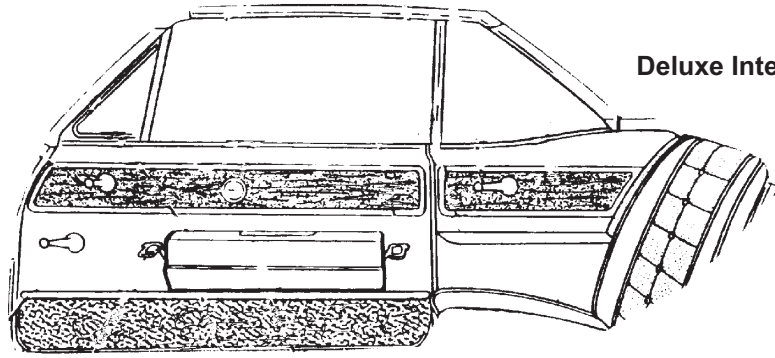
#### Fabric Codes ( )

Green .....(FGL) Trim #610  
 Blue .....(FHL) Trim #611  
 Fawn .....(FFL) Trim #613  
 Black .....(FBL) Trim #618

#### Vinyl Codes ( )

Green .....(HJL)  
 Blue .....(HDL)  
 Fawn .....(HFL)  
 Black .....(HBL)

# 1963-1965 Walnut Veneer Wood Kits



Deluxe Interior Pictured

**All of our kits are made with genuine Walnut Veneer just as BUICK used.**

We use no stain or coloring of any type so you are assured of seeing only the natural color of the walnut, again as per original. Each piece is sanded and coated three times with clear satin to duplicate the original texture and finish. Adhesive backing is incorporated to give the ease of "peel and stick" installation.

All panels are steel rule die cut so they fit as the originals. Door panels come without holes (set up for power windows). Holes will have to be made for crank window and remote mirror applications. Rear seat panels are included in door kits. 1965 door panels come with black lines already painted. Please state if you have air conditioning or not. Due to variation in original molds, minor trimming with a hobby knife or razor blade may be required.

- 1965 Standard Interior Door Kits.**  
 WKD65S....(Horizontal Grain as Original).....\$65.75 pr.  
 WKD65SV.....(Vertical Grain).....\$49.50 pr.  
**1965 Standard Interior Full Kit.**  
 WK65S.....\$193.00 kit

## Deluxe Wood Panel Kits

### Door Panel Kits

- 1963-1964 Riviera wood door panel kit.** Four pieces.  
 WKD634.....\$112.50 set  
**1965 Riviera wood door panel kit.** Four pieces w/ lines.  
 WKD65.....\$179.00 set

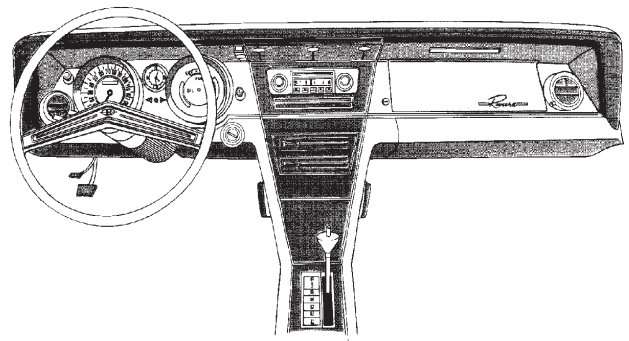
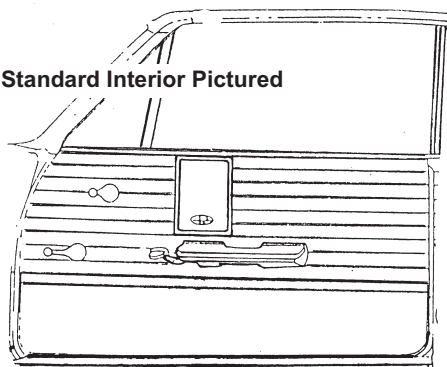
### Console Kits

- 1964 Riviera w/o a.c. wood console panel kit.** Five pieces.  
 WKC64.....\$137.50 set  
**1964 Riviera with a.c. wood console panel kit.** Five pieces.  
 WKC64A .....\$137.50 set  
**1965 Riviera All.Wood console panel kit.** Four pieces.  
 WKC65.....\$127.50 set

### Full Interior Kits

- 1964 Riviera w/o a.c. wood panel kit.** All 9 interior pieces.  
 WK64 .....\$240.00 set  
**1964 Riviera with a.c. wood panel kit.** All 9 interior pieces.  
 WK64A .....\$240.00 set.  
**1965 Riviera wood panel kit.** All 8 pieces.  
 WK65 .....\$259.00 set

Standard Interior Pictured



# Seat Belts (Group 14)

## Seat Belts

Quality made aftermarket seat belts come in various colors and styles. Colored belts: add \$3 and code, are custom made and not returnable. Please see our website for colors. 74" recommended for fronts, 60" for rears. Per person.

### (Chrome Lift Lever Style)



Lap Belts come standard with authentic style chrome buckle. Black (B), tan (T), rust (R), dark brown (DB), orange (O), glove red (GR), maroon (M), charcoal (C), navy blue (NB), powder blue (PB), turquoise (TQ), ivory (I), white (W), gray (G), silver (S), dark green (DG).

- SB20074B.....(74" Black).....\$32.00 ea.
- SB20060B.....(60" Black).....\$32.00 ea.
- SBH200.....(Hardware Kit).....\$5.25 ea.

### Plastic Push Button Style



Lap belts with push-button plastic buckle. Black (B), Taupe (T), Maroon (M), Light Gray (LG), Blue (U). Sizes available are 60" and 74" for the black, light gray and taupe. The blue and maroon are available in 74" only. Colored belts, (add \$3 and code), are custom made and not returnable.

- SB200P74B.....(74" Black).....\$32.00 ea.
- SB200P60B.....(60" Black).....\$32.00 ea.
- SBH200.....(Hardware Kit).....\$5.25 ea.

### Metal Push Button Style



Lap belts with push-button metal buckle. Black (B), Taupe (T), Gray (G), Colored belts, (add \$3 and code), are custom made and not returnable.

- SB200M74B.....(74" Black).....\$32.00 ea.
- SB200M60B.....(60" Black).....\$32.00 ea.
- SBH200.....(Hardware Kit).....\$5.25 ea.

## Seat Belt Hardware Kit



- SBH200 .....\$5.25 ea.

## Seat Belt Buckle Emblems



- Buick Red, white and blue Tri-Shield. Fits well on our Lift Lever Seat Belts.
- D418 .....\$5.50 ea.



- Old Style Buick Coat of Arms. Fits well on our Lift Lever Seat Belts.
- TBE550 .....\$7.50 ea.



- GM Mark of Excellence. Fits well on our Lift Lever Seat Belts.
- D55 .....\$3.75 ea.



- GM Mark of Excellence. Embossed. Fits well on our Lift Lever Seat Belts.
- D55E .....\$6.50 ea.



- 1967-1972 GM Mark of Excellence. Seat belt emblem.
- SBE672 .....\$6.50 ea.

## Bucket Seat Hinge Cap



- 1963-1965 Riviera
- HC625 .....\$12.00 ea.

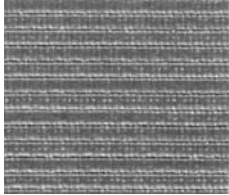


www.oldbuickparts.com  
908-369-3666

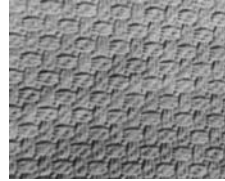
We have a few of the exact original grain and colors and hope to add more. Please send a small piece of your headliner and we will do our best to match it. If we do not have the exact grain we will send you a sample of the closest color we have.

OUR headliners come with extra material to cover your visors.

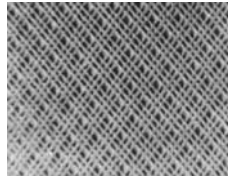
**1963-1965**



<b>Original Grain Material</b>	<b>\$167.25</b>
Black HL635	
White HL635W	
Dark Red HL635R	
Dark Blue HL635U	
Silver HL635S	
Saddle (sprayed) HL635SAD	
Other colors - send your samples	



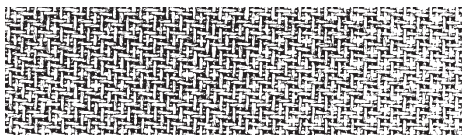
<b>Non-Original Grain</b>	<b>\$129.50</b>
<i>Basketweave</i>	
HLB635.....Black.....	\$129.50
HLB635W.....White.....	\$129.50
HLB635DB.....Dark Blue...	\$129.50
HLB635LB.....Light Blue...	\$129.50



<b>Non-Original Fineweave Grain</b>	<b>\$210.25</b>
HLF635.....Black.....	\$210.25 ea.
HLF635W.....White.....	\$210.25 ea.
HLF635T.....Tan.....	\$210.25 ea.
HLF635R.....Red.....	\$210.25 ea.
HLF635LB.....Light Blue.....	\$210.25 ea.
HLF635BB.....Bright Blue.....	\$210.25 ea.
HLF635B.....Beige.....	\$210.25 ea.

**Sunvisor Recovering Service**

**1963-1965 All.**  
Please carefully remove your material before sending the sunvisors to us. The price includes material and new chrome ends installed. We cannot recover badly warped visors. Recovering service.  
SR635.....\$72.25 ea.



**Package Shelf Material**

All models as required. Woven straw material duplicates the texture and appearance of the original. Comes in 18" x 64" roll. It can be applied to hardboard with spray adhesive (SA360), then trimmed to fit. Paint to match. All models as required.  
PS300.....\$59.50 ea.

**1963-1965 Rear Sail Panels**

Ready to install, already covered with headlining material.  
SP635.....\$99.50 pr.  
**Bare Panels** - you cover yourself.  
SP635B.....\$99.50 pr.

**1982-1986 Convertible Top Boots**

TB826.....\$177.25 ea.

**1982-85 Convertible Top Cylinders**

We now have new convertible top cylinders for all 1982-1985 Riviera.  
TC825R.....\$100.00 ea.

**Sound Deadening Material**

**Heavy, Black, Tar type material.**  
SD300.....39" x 72".....\$44.75 ea.  
**Waffle pattern, Dark Brown, more paper type.**  
SD301.....27" x 36".....\$27.50 ea.  
**Closed-cell foam. Adhesive-backed. Form-fitting. Light and soft. Nice underpadding.**  
SD302.....42" x 72".....\$37.50 ea.