

Transmission • Brakes (Group 4)

Automatic Transmission Kits (4.005)

Models Special, Skylark, GS	Year	Master Overhaul Kit	Banner Kit	Paper, Rubber, Rings and Seals	External Seal-up Kit
Dualpath.....	1961-1963.....	TOK613S	TKB613S	TRK613S	TSK613S
		\$299.50 ea.	219.50 ea.	\$149.50 ea.	\$94.50 ea.
T400.....	1964-1972.....	TOK400.....	TKB400.....	TRK400.....	TSK400.....
		\$149.50 ea.....	\$89.50 ea.....	\$69.50 ea.....	\$53.75 ea.....
ST300.....	1964-1969.....	TOK300	TKB300.....	TRK300.....	TSK300.....
		\$177.75 ea.	\$113.50 ea.	\$129.50 ea.....	\$53.75 ea.....
TH350.....	1969-1972.....	TOK350	TKB350.....	TRK350.....	TSK350.....
		\$95.50 ea.....	\$113.50 ea.....	\$39.50 ea.....	\$53.75 ea.....

Master Overhaul Kit: Gaskets, Friction (lined) Clutches, Lip Seals, Steel Clutches, "O" Rings, Front Pump Seal, Sealing Rings and Extension Housing Seal.

Banner Kit: Same as Master Kit, but without Steel Clutches.

Paper, Rubber, Rings and Seals: All Gaskets, Lipseals, O-Rings, Sealing Rings (Popular Set), Front Pump Seal and Ext. Hsg. Seal.

External Seal-up Kit: Stops any external Leaks. Contains Front Pump Seal, Extension Housing Seal, Selector Lever Seal and External Gaskets (including Pan Gasket and Converter Gasket or O-Ring).

Auto Transmission Oil Pan Gaskets

1961-1963 Dual path, 1 bolt. TPG613	\$19.50 ea.
1964-1969 Super Turbo 300, 14 bolt. TPG649	\$11.50 ea.
1964-1972 Turbo-Hydramatic 400, 13 bolt. TPG645	\$9.50 ea.

Transmission Gaskets Standard Transmission Envelope Sets

CARS#	YEARS	APPLICATION	PRICE
TGS613	1961-1963:	All	\$19.75
TGS659	1965-1969:	All (Floor Shift)	\$15.00



Transmission Filter Change Kits

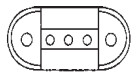
1964-1969 With S.T. 300 (except early 1964). TFK300	\$36.75 ea.
1964-1966 All TH400; 1967 Early type TH400 with tube. TFK400T	\$36.75 ea.
1967 Late TH400 with flat filter; 1968-1972 All TH400. TFK400	\$15.00 ea.
1969-1972 With Turbo 350. TFK350	\$13.00 ea.

Transmission Seals



1964-1972 All front pump oil seal. TS646	\$11.50 ea.
1961-1972 Transmission rear seal. 1961-1963: All; 1964-1972: All ST300, TH350, TH375. TS616	\$10.75 ea.
1964-1968 All TH400, rear. TS640	\$12.25 ea.
1969-1972 All TH400, rear. TS696	\$11.50 ea.

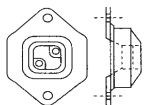
Transmission Mounts



1961-1963 All. Exchange item.
TM613RS\$109.50 ea.



1964-1972 All with standard transmissions;
1964-1972 All ST300 and TH350 transmissions.
TM642\$19.00 ea.



1967-1972 All TH400 transmission.
TM650\$12.50 ea.

Transmission Lines

1968-1972 Radiator to transmission. Cools transmission fluid.
TL682\$53.75 ea.



Console Shift Lever

For Long Console: Chrome Plastic Insert that Clips into Black Plastic. Replaces Worn Chrome Handle.

1970-1975 Auto transmission. Shift lever.
SL705\$28.25 ea.

Transmission Shift Cable

1968-1972 all with long console.
SC682\$65.75 ea.



Transmission Cable Bracket



1968-1972
TCB682\$25.00 ea.

Shift Boots



1964-1965 With console;
1965-1967 All 4-speed with console;
1967 All 3-speed with console.
SB647\$32.25 ea.



1965-1972
1965-1972: GS;
1968-1972: Skylark with consolette (upper).
SB652\$45.25 ea.
1968-1972 All with consolette lower.
SB682\$61.00 ea.

Transmission Governor



All TH350 and TH400. Allows upshift to 5600-5800 rpm range at full throttle instead of stock 4600-5000 range.
TG700\$69.75 ea.

Neutral Safety and Back Up Switch



1964-1966 ST300 exc. long console.
NSS646\$14.50 ea.



1967-1968 All with automatic trans.;
1969-1970 all with long console.
NSS670\$27.75 ea.



1969-1970 All TH400 w/ column shift;
1971-1972 all TH400.
NSS692\$24.50 ea.

Speedometer Cables



1961-1972
SC612\$22.75 ea.
1961-1972 All. Speedometer cable repair kit.
SRK360\$16.00 ea.

Speedometer Cable Lubricant



1961-1972 All.
SCL300\$5.00 ea.

Vacuum Modulator



1964-1969 All V-8 with ST300 except GS;
1964-1972 All TH350 and TH400.
VM642\$35.00 ea.



4-Speed Shift Pattern Plate

All years as required.
SP610\$23.25 ea.

Transmission Lock Linkage



(Also allows reverse lights to function)
For floor shift automatic or manual, or column shift automatic cars. Kit includes rod, swivel and nut.

1969-1972 with auto transmission.
TLL692\$77.50 ea.



Reverse Lockout Kit

1969-1972 4 speed trans. 4 piece.
RLK692\$99.00 ea.

Transmission Gear Selector Lever



This lever mounts onto the transmission and is designed for shifter cables. Uses trunnion block original setup. Sold individually.
TSL682\$19.00 ea.

Brakes (Group 4)



MC646P



MC685

Master Cylinder

1964-1966 Manual brakes.

MC646.....\$79.50 ea.

1964-1966 Power brakes.

MC646P.....\$78.50 ea.

1967-1972 All regular and power brakes with drums.

MC672.....\$89.50 ea.

1968-1972 All with power disc brakes.

MC685.....\$59.50 ea.

Master Cylinder Rebuild Kits

1961-1963

1961-1963: All;

1964-1966: All with manual brakes.

MK596.....\$26.25 ea.

1964-1966 All with Delco Moriane power brakes.

MK646.....\$20.75 ea.

1967-1972 All drum brakes.

MK672.....\$45.75 ea.

1967-1972 All with Moraine power disc brakes.

MK675.....\$30.50 kit

Front Wheel Cylinders and Repair Kits (4.667)

1961-1963 All (1")

FWC613R.....RH Side.....\$51.00 ea.

FWC613L.....LH Side.....\$51.00 ea.

RK370.....Repair Kit.....\$9.50 ea.

1964-1966 Special, Skylark and Sportwagon (1 1/16")

FWC646R.....RH Side.....\$36.75 ea.

FWC646L.....LH Side.....\$36.75 ea.

FK646.....Repair Kit.....\$9.50 ea.

1965-1966 GS ;

1967 All Skylark, GS and Sportwagon (1 1/8")

FWC657R.....RH Side.....\$25.00 ea.

FWC657L.....LH Side.....\$25.00 ea.

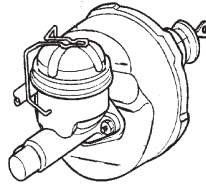
FK652.....Repair Kit.....\$9.75 ea.

1968-1972 All Skylark, GS and Sportwagon (1 1/8")

FWC682R.....RH Side.....\$31.50 ea.

FWC682L.....LH Side.....\$31.50 ea.

FK652.....Repair Kit.....\$9.75 ea.



Power Brake Rebuild Service Master Cylinder and Booster with Exchange

1961-1974 All.

PBR610.....\$249.50 ea.

Delco Moraine Power Brake Booster

Licensed by GM. Correct in all detail including Gold iridite plating and "DELCO MORAINÉ" stamping.

1964-1966 All

BB646.....\$197.50 ea.

1967-1972 All

BB672.....\$197.50 ea.

Brake Booster Hose Pinch Clamp

PC1116.....\$1.25 ea.

Brake Booster Vacuum Check Valve (4.955)



1968-1972 All.

CV682.....\$12.75 ea.

Silicon Brake Fluid

1963-1980 Silicon brake fluid. (one gallon).

SF360.....\$63.00 ea.



Rear Wheel Cylinders and Repair Kits

1961-1963 All (7/8")

RWC613.....RH and LH Side.....\$49.00 ea.

RK613.....Repair Kit.....\$8.00 ea.

1964-1966 All Skylark and GS ;

1967 Skylark (15/16")

RWC644.....RH and LH Side.....\$22.25 ea.

RK644.....Repair Kit.....\$9.50 ea.

1964-1970 Sportwagon (1")

RWC640R.....RH Side.....\$58.75 ea.

RWC640L.....LH Side.....\$58.75 ea.

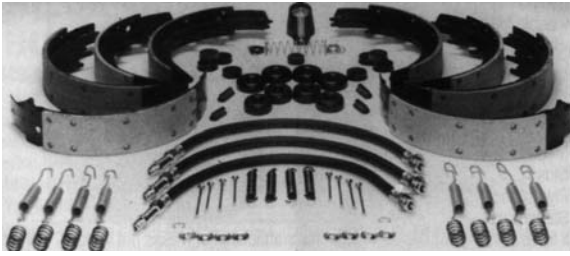
RK640.....Repair Kit.....\$8.50 ea.

1967 GS;

1968-1972 All Skylark and GS except Sportwagon (7/8")

RWC672.....RH and LH Side.....\$18.50 ea.

RK672.....Repair Kit.....\$8.50 ea.



Brake Overhaul Kits

Our complete kits include the following:

- 4 Wheel cylinder kits
- 1 Master cylinder kit
- 4 Brake shoes with linings, or discs
- 3 Hydraulic brake hoses
- Brake spring hardware kit
- Order wheel cylinders separately

1961-1963 All. Send in old shoes or add \$50.00 core charge.

BOK613\$167.75 ea.

1964-1972 All manual drum brakes.

BOK642\$149.50 ea.

1968-1972 All with power drum brakes.

BOK682PD\$167.75 ea.

1969-1972 All with Moraine power disc brakes.

BOK692PMD\$177.75 ea.

Front Brake Hoses (4.680)

1961-1963 All. Front.

FH613\$19.50 ea.

1964-1967 All with drum brakes.

FH647\$18.50 ea.

1967 All with disc brakes.

FH67\$18.50 ea.

1968-1972

1968: All;

1969-1972: All drum brakes.

FH682\$16.50 ea.

1969-1972 All with disc brakes.

FH692\$16.50 ea.



Rear Brake Hoses

1961 All.

RH61\$24.50 ea.

1962-1963 All.

RH623\$24.50 ea.

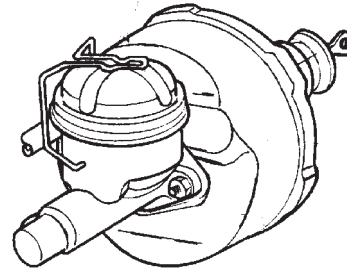
1964-1967 All with drum brakes.

RH626\$18.50 ea.

1969-1972 All rear brakes.

RH682\$24.50 ea.

Front Drum to Disc Conversion Kits



1964-1972 All with manual brakes.

DCK642M\$897.50 kit

1964-1972 All with power brakes.

DCK642P\$698.50 kit



Brake Hardware



Brake Shoe Hold Down Spring Kits

1961-1963 All.

BSK613.....(Front for Drum Brakes).....\$17.00 ea.

BSK613R.....(Rear).....\$17.00 ea.

1964-1972 All.

BSK642.....(Front for Drum Brakes).....\$16.50 ea.

BSK642A.....(Rear).....\$16.50 ea.

Self Adj. Wheel Kit for Disc Brakes

1967-1972 All, left.

BSK672L\$19.25 ea.

1967-1972 All, right.

BSK672R\$19.25 ea.

Drum Brakes

1963-1972 All, rear left.

BSK632L\$19.25 ea.

1963-1972 All, rear right.

BSK632R\$19.25 ea.

1936-1980 Brake adjuster hole plug.
(4 per car).

BC340.....\$1.00 ea.



Brake Hose Clip

1961-1972 All.

BC360.....\$1.25 ea.

Brakes (Group 4)



Brake Shoes and Pads

- 1961-1963** Special and Skylark. Front, exchange.
 FBS613\$38.50 set
- 1961-1963** Special and Skylark. Sold outright.
 RBS613\$45.75 set
- 1964-1972** All, front shoes;
1964-1969 Sportwagon rear shoes.
 BS642\$45.75 ea.
 BS642D.....(Genuine Delco Rivited)\$50.00 ea.
- 1967-1968** All, front. Discs.
 FDP678\$26.00 ea.
- 1969-1972** All, front. Discs.
 FDP692\$23.50 ea.
- 1964-1972** All, except 1964-1969 Sportwagon. Rear shoes;
 RBS642\$40.75 set

Brake Adjusting Screws

- 1967-1972** All. Fits front and rear.
 BAS674L.....(Fits left hand side).....\$10.75 ea.
 BAS674R.....(Fits right hand side).....\$10.75 ea.

Brake Line Clip Sets Correct Style in Correct Colors

- 1964-1965** All.....BLC645.....9 pc.set.....\$21.00 set
1966-1967 All.....BLC667.....9 pc set.....\$20.75 set

Disc Brake Caliper Repair Kits

- 1967-1968** All with front disc brakes. For 1 wheel.
 CRK678\$19.50 ea.
1969-1972 All with front disc brakes. For 1 wheel.
 CRK696\$16.50 ea.



Brake Drums and Rotors

- 1964-1972** All Front. Cast iron.
 BD642F\$57.50 ea.
1964-1972 All Rear exc. wagons.
 BD642R\$47.50 ea.
1967-1969 Sportwagon. Front and rear.
 BD679W\$87.50 ea.

Rotors

- 1969-1972** All.
 BD692\$75.25 ea.

Brake Pedal Pads



- 1964-1972** Auto transmission with drum brakes.
 PC642\$8.50 ea.
- 1964-1972** Standard transmission. For brake and clutch.
 PC642S\$9.50 ea.
1967-1972 All w/ disc brakes. (pad only)
 PC672\$16.50 ea.
1964-1972 Parking brake.
 PC642E\$4.25 ea.

Stop Light Switches (2.447)

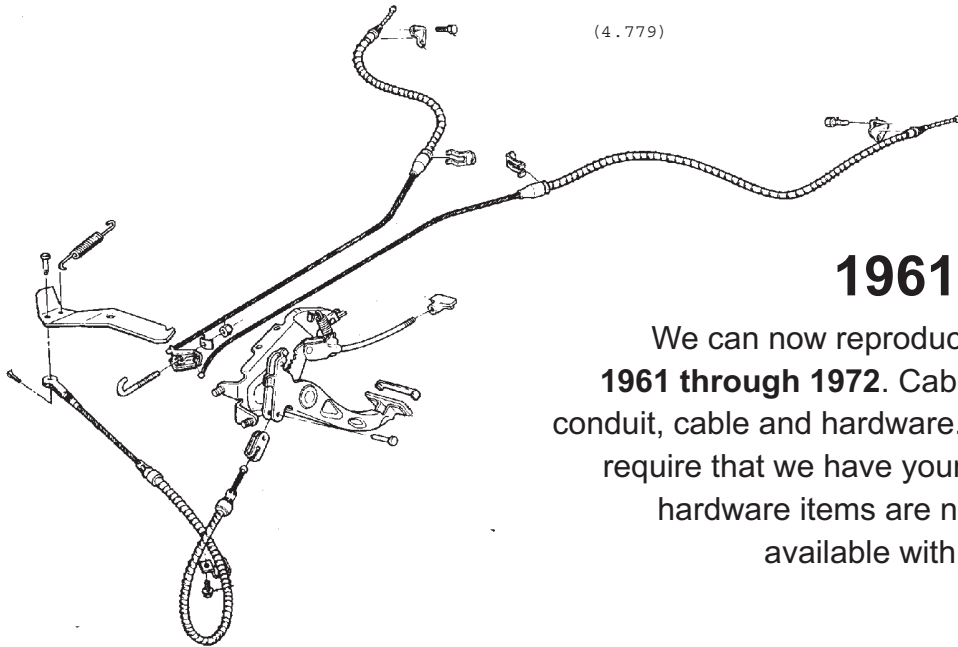


- 1961-1963** All.
 SLS563\$9.75 ea.
1964-1970 All.
1971-1972 All except cruise control.
 SLS645\$12.75 ea.

Brake Junction Blocks



- 1964-1965** With single master cylinder reservoir.
 JB645\$30.25 ea.
1964-1967 With dual master cylinder reservoir.
 JB647\$32.50 ea.
1966 With single master cylinder reservoir.
 JB66\$29.50 ea.



1961-1972

We can now reproduce any cable listed from **1961 through 1972**. Cables are made using correct conduit, cable and hardware. Please note, some cables (*) require that we have your old unit for parts as some hardware items are not available. Some are available with a core charge.

Year & Model	Front	Center	Rear
1961 Special	R579055\$79.50 ea.....	R579062.....\$79.50 ea.....	R579056 (RH)\$79.50 ea. R579057 (LH).....\$79.50 ea.
1961 Skylark	R579055\$79.50 ea.....	R579062.....\$79.50 ea.....	R1351992.....\$79.50 ea.
1962-1963 Spec & Sky	R1352512\$79.50 ea.....		R583682 (RH)\$79.50 ea. R583683 (LH).....\$79.50 ea.
1964-1966 All ex. wag.	R1394278\$65.00 ea.....	R1361843.....\$29.50 ea.....	R1367389 (2)\$79.50 ea.
1964-1966 Sportwagon	R1394278\$65.00 ea.....	R1363387.....\$79.30 ea.....	R1367389 (2)\$79.50 ea.
1967 Special & Skylark; 1967 GS w/out TH400	R1394278\$65.00 ea.....	R1361843.....\$29.50 ea.....	R1379642 (2)\$79.50 ea. (without Nylon type)
1967 GS with TH400	R1394997\$79.50 ea.....	R1382066.....\$34.50 ea.....	R1373389 (1)\$54.50 ea. (with Nylon type)
1967 Sportwagon with TH400	R1394353\$79.50 ea.....	R1381418.....\$79.50 ea.....	R1379642 (2)\$79.50 ea. (without Nylon type)
1967 Sportwagon without TH400	R1394278\$65.00 ea.....	R1363387.....\$79.50 ea.....	R1379642 (2)\$79.50 ea. (without Nylon type)
1968-1972 All two door except TH400	R1394278\$65.00 ea.....	R1382395.....\$44.50 ea.....	R1382429 (2)\$54.50 ea.
1968-1972 All four door except wagons	R1394278\$65.00 ea.....	R1361843.....\$29.50 ea.....	R1382429 (2)\$54.50 ea.
1968-1972 GS with TH400	R1394997\$79.50 ea.....	R1374758.....\$44.50 ea.....	R1382429 (2)\$54.50 ea.
1968-1969 Sportwagon with TH400	R1394997\$79.50 ea.....	R1381418.....\$79.50 ea.....	R1382429 (2)\$54.50 ea.
1968-1969 Sportwagon without TH400	R1394278\$65.00 ea.....	R1240298.....\$79.50 ea.....	R1382429 (2)\$54.50 ea.
1971-1972 Sportwagon with TH400	R1394997\$79.50 ea.....	R1374758.....\$44.50 ea.....	R1382429 (2)\$54.50 ea.
1971-1972 Sportwagon without TH400	R1394278\$65.00 ea.....	R1240298.....\$79.50 ea.....	R1382429 (2)\$54.50 ea.

ITEMS NOT PRICED MUST BE QUOTED. PLEASE INQUIRE!

Steel Brake Lines (Group 4)

Front Brake Line Kits				
<u>PART #</u>	<u>YEAR</u>	<u>DESCRIPTION</u>	<u>ORIGINAL MATERIAL</u>	<u>STAINLESS STEEL ("S")</u>
FBL67A	1967	Standard drum, 4 line set.....	\$80.75 ea.	\$112.25 ea.
FBL67B	1967	Power drum, 4 line set.....	\$80.75 ea.	\$112.25 ea.
FBL682A	1968-1972	Standard drum, 4 line set.....	\$80.75 ea.	\$112.25 ea.
FBL682B	1968-1872	Power drum, 4 line set.....	\$80.75 ea.	\$112.25 ea.
FBL689A	1968-1969	Power disc, 5 line set.....	\$80.75 ea.	\$112.25 ea.
FBL70A	1970	Power disc, 5 line set.....	\$80.75 ea.	\$112.25 ea.
FBL712A	1971-1972	Power disc, 4 line set.....	\$80.75 ea.	\$112.25 ea.
Front to Rear Brake Lines				
CBL645A	1964-1965	Front to rear, convertible.....	\$64.25 ea.	\$86.00 ea.
CBL645B	1964-1965	Front to rear, hardtop.....	\$64.25 ea.	\$86.00 ea.
CBL66A	1966	Front to rear, hardtop.....	\$64.25 ea.	\$86.00 ea.
CBL66B	1966	Front to rear, convertible.....	\$64.25 ea.	\$86.00 ea.
CBL67A	1967	Front to rear, hardtop.....	\$64.25 ea.	\$86.00 ea.
CBL67B	1967	Front to rear, convertible.....	\$64.25 ea.	\$86.00 ea.
CBL68A	1968	Front to rear, hardtop.....	\$64.25 ea.	\$86.00 ea.
CBL68B	1968	Front to rear, convertible.....	\$64.25 ea.	\$86.00 ea.
CBL69A	1969	Front to rear, hardtop.....	\$64.25 ea.	\$86.00 ea.
CBL69B	1969	Front to rear, convertible.....	\$64.25 ea.	\$86.00 ea.
CBL70A	1970	Front to rear, hardtop, disc only, 2.....	\$64.25 ea.	\$86.00 ea.
CBL70B	1970	Front to rear, convertible, disc only two piece line.....	\$64.25 ea.	\$86.00 ea.
CBL702A	1970 1971-1972	Front to rear, hardtop, drum Front to rear, hardtop, all.....	\$64.25 ea.	\$86.00 ea.
CBL702B	1970 1971-1972	Front to rear, convertible, drum Front to rear, convertible, all.....	\$64.25 ea.	\$86.00 ea.
Rear Axle Brake Lines				
RBL646	1964-1966	All cars, 2 line set.....	\$39.00 set	\$50.50 set
RBL67	1967	All cars, 2 line set.....	\$39.00 set	\$50.50 set
RBL682	1968-1972	All cars, 2 line set.....	\$39.00 set	\$50.50 set