

Floorpans. 19 gauge

Full Side Floor Pans are made of heavy 20 gauge steel measuring approximately 24-1/2" at the top and about 27-1/2" at the rear. Length is approximately 61" long.
Sent by UPS.



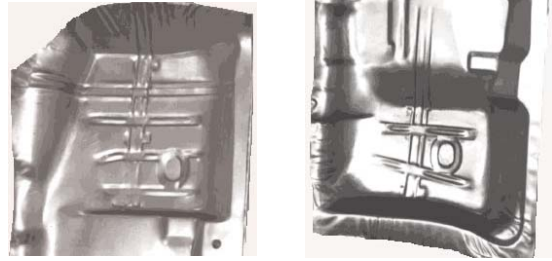
(12.980)

- 1964-1967 Left side.**
FF647L.....\$105.00 ea.
- 1964-1967 Right side.**
FF647R.....\$105.00 ea.
- 1964-1967 Left and right sides.**
FF647P.....\$191.50 ea.
- 1964-1967 Complete 1 piece unit.** Sent truck freight collect.
FF647.....\$191.50 ea.
- 1968-1972 Left side.**
FF682L.....\$107.00 ea.
- 1968-1972 Right side.**
FF682R.....\$107.00 ea.
- 1968-1972 Left and right sides.**
FF682P.....\$197.50 ea.
- 1968-1972 Complete 1 piece unit.** Sent trunk freight collect.
FF682.....\$191.50 ea.

4-Speed Shift Hump Plate

- 1964-1967**
1964-1966: All with console;
1967: Non console.
- HP647.....\$42.50 ea.
- 1967 All with console.**
HP67.....\$42.50 ea.
- 1968-1972 All.** Some trimming/fabricating required.
HP682.....\$42.50 ea.

Front/Rear Floor Pans



- 1964-1967 Front left.**
FP647L.....\$60.00 ea.
- 1964-1967 Front right.**
FP647R.....\$60.00 ea.
- 1964-1967 Rear left.**
RP647L.....\$60.00 ea.
- 1964-1967 Rear right.**
RP647R.....\$60.00 ea.
- 1964-1967 All 4 sections.**
FP647S.....\$211.25 ea.
- 1968-1972 Front left.**
FP682L.....\$60.00 ea.
- 1968-1972 Front right.**
FP682R.....\$60.00 ea.
- 1968-1972 Rear left.**
RP682L.....\$60.00 ea.
- 1968-1972 Rear right.**
RP682R.....\$60.00 ea.
- 1968-1972 All 4 sections.**
FP682S.....\$211.25 ea.



Floor Braces

- 1964-1972 Front brace.** Under front of front seat.
FB642F.....\$117.00 ea.
- 1964-1972 Middle brace.** Under rear of front seat.
FB642M.....\$117.00 ea.
- 1964-1967 Rear brace.**
FB647R.....\$131.50 ea.
- 1968-1972 Rear brace.**
FB-682R.....\$113.00 ea.

Floor Pan Plugs



- 1964-1966 All.**
FP646.....\$3.75 ea.
- 1967-1972 All.**
FP672.....\$3.75 ea.

Floor Pans (Group 12)

Floor Pan Sound Deadener Kits



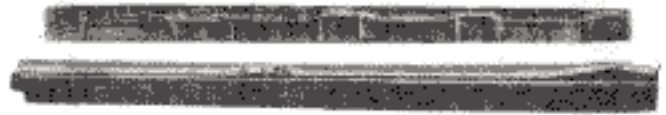
Our superior sound deadener floor kits are pre-cut heavy tar like material with paper backing just like Buick made them. They come ready to install and look factory original.

- 1964-1967 All.**
 SD647\$65.00 ea.
- 1968-1972 All.**
 SD682\$65.00 ea.

Body Plugs



- | | | |
|-------|-------------------------|------------|
| BP120 | 1/2" Hole Diameter..... | \$1.75 ea. |
| BP580 | 5/8" Hole Diameter..... | \$1.75 ea. |
| BP340 | 3/4" Hole Diameter..... | \$2.25 ea. |
| BP780 | 7/8" Hole Diameter..... | \$2.25 ea. |
| BP100 | 1" Hole Diameter..... | \$1.75 ea. |
| BP114 | 1 1/4" Hole Dia. | \$1.75 ea. |
| BP112 | 1 1/2" Hole Dia. | \$2.25 ea. |
| BP118 | 1 1/8" Hole Dia. | \$2.50 ea. |



Rocker Panels

- 1964-1967 All 2-door models. Fits outer L.H. side.**
 RP647SL.....\$40.75 ea.
- 1964-1967 All 2-door models. Fits outer R.H. side.**
 RP647SR.....\$40.75 ea.
- 1968-1972 All 2-door models. Fits outer L.H. side.**
 RP682SL.....\$40.75 ea.
- 1968-1972 All 2-door models. Fits outer R.H. side.**
 RP682SR.....\$40.75 ea.



www.oldbuickparts.com

908-369-3666

Pillar Drip Mouldings



1968-1972 All 2-door hardtops. Polished stainless steel.
PM682\$30.25 pr.

1968-1972 All 2-door hardtops.
Drip rail connectors.
Polished stainless steel.
DRC682.....\$14.00 pr.



Drip Rail Moulding Set



1970-1972 All 2-door hardtops. Complete set of 6 polished stainless steel mouldings.
DRM702.....\$80.75 set



Rear Deck Filler Panel
1970-1972 All Hardtop models.

RD702\$249.50

Deck Lid (Trunk)
1970-1972 All Hardtop models.

DL702\$259.75

1970-1972 Deck Lid (Trunk) Moulding

DLM702.....(includes clips)\$59.50



1970-1972 Quarter Panels
Available For Coupes, Hardtops.
(Convertibles with minor trimming)

QP702L.....(L.H. Side)\$659.75 ea.
QP702R.....(R.H. Side)\$659.75 ea.

Quarter Panel Outer Wheel House

1970-1972 All Hardtop models. Can work on convertible models with minor modification.



WH702L.....(L.H. Side)\$197.00 ea.
WH702R.....(R.H. Side)\$197.00 ea.

Quarter Panel Inner Wheel House
1964-1972 All



WH647LI.....(1964-1967 L.H. Side)\$157.50
WH647RI.....(1964-1967 R.H. Side)\$157.50
WH682LI.....(1968-1972 L.H. Side)\$134.75
WH682RI.....(1968-1972 R.H. Side)\$134.75

1970-1972 Quarter Panel Extension Mouldings



EM702L.....(L.H. Side)\$39.75 ea.
EM702R.....(R.H. Side)\$39.75 ea.
EM702P.....(Both Sides)\$75.75 pr.

Rear Quarter Panels • Nameplates (Group 12)

1964 Skylark "Bird" emblem. Used on rear 1/4 panel and trunk. Die cast chrome, beautifully reproduced.
QE64B\$25.00 pr.



1964-1966 "Skylark" quarter panel monogram. Chrome.
QM646S\$17.25 ea.



1965 "Gran Sport" monogram. Used on rear 1/4 and sail panel. Die cast chrome with black & red painted sections.
DM65GS2\$39.50 ea.

1966 Skylark "Bird" emblem. Used on rear 1/4 panel. Die cast chrome, beautifully reproduced.
QE66B\$27.50 ea.



1966 "Gran Sport" monogram. Used on rear 1/4 and trunk lid. Die cast chrome with black and red painted sections.
DM66GS\$51.00 ea.



1967 "Skylark" quarter panel monogram. Chrome.
QM67S\$22.00 ea.



www.oldbuickparts.com
908-369-3666



1967-1969 "GS" Monogram. Please note: Mounting studs may be slightly different.
QM679G\$23.75 ea.



1967-1968 "350" Nameplate. Used on Rear 1/4 and trunk lid.
QM350\$24.00 ea.



1967-1969 "400" Nameplate. Used on Rear 1/4 and trunk lid.
QM400\$29.25 ea.



1968-1969 "California" monogram.
QM689C.....\$39.75 ea.
QM689CP.....(Matched pair).....\$67.25 pr.



1968-1972 "Skylark" quarter panel monogram. Chrome.
QM682S\$20.00 ea.



1970 Skylark "Tri-Shield" sail panel emblem.
SE70\$32.25 ea.



1970-1972 "Custom" 1/4 panel plate.
QM702C.....\$25.25 ea.

1971-1972 Skylark "Tri-Shield" sail panel emblem.
SE712.....\$40.75 ea.



1972 "Sun Coupe" sail panel.
SE72C.....\$39.50 ea.

(Group 12) **Deck Lid • Spoilers • Nameplates**

1964 "Special" monogram on rear 1/4.
FM645S\$36.50 ea.



1964-1965 "BUICK" trunk letters. Die cast chrome.
TL645\$59.50 set
1966-1967 "BUICK" trunk letters.
DL667.....



1964 "Skylark" decklid monogram.
DM64S\$30.25 ea.
1965 "Skylark" decklid monogram.
DM65S\$31.00 ea.
1967 "340" rear panel monogram.
QM340\$29.25 ea.



1967 "400" decklid nameplate.
DM67\$29.25 ea.



1967-1968 "GS" decklid nameplate.
DM67G.....(1967).....\$23.75 ea.
FM682G.....(1968).....\$23.75 ea.



1968 "350" rear 1/4 + decklid nameplate.
QM350\$24.00 ea.



1969 "GS" Trunk lock cover monogram and base assembly. Includes spring.
LA69\$81.75 ea.
LA69B.....(Base only, "By Buick")\$40.75 ea.
LA69S.....(Spring only).....\$4.75 ea.



1970-1972 "GS" decklid monogram.
DM702G\$33.50 ea.



1971 "BY BUICK" nameplate.
DM71B\$14.75 ea.



1970 Skylark, models 3327, 3369;
1971 All; "Buick" decklid nameplate.
DM71\$37.50 ea.



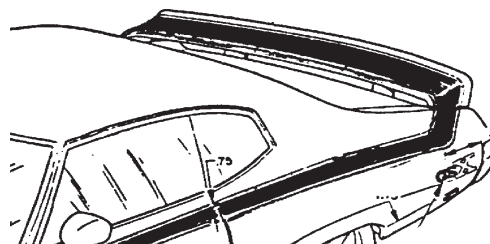
1970-1972 "Custom" decklid plate.
DM702C.....\$27.25 ea.



1970-1972 "Skylark" decklid monogram.
DM702S\$22.25 ea.

Rear Spoiler

1970-1972 Rear spoiler.
RS702\$229.00 ea.



Rear Spoiler Inner Brackets

SB702\$32.00 pr.



Trunk Lock and Keys

1963-1972
1963-1965;
1967-1972 All with lock on lid.
TL609\$16.50 ea.
LR689.....(1968-1968 trunk lock retainer)\$19.50 ea.
1961, 1962 and 1966 All with lock on lid.
TL609B.....\$19.75 ea.

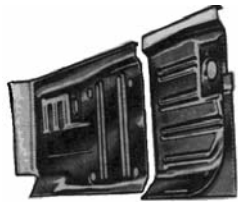


Trunk Lock Gasket

1961-1972 All as required.
KLG540\$1.25 ea.



Trunk (Group 12)



Trunk Floor

*Finest Reproduction Available.
7 piece Kit.*

*Includes Trunk Braces
Available From 1964-1972*

CARS#	YEARS	APPLICATION	PRICE
TF647	1964-1967	\$383.00
TF682	1968-1972	\$383.00

Trunk Weatherstripping

1961-1972 All. Best Quality at any price.

TW54215	\$25.50
---------	-------	---------

Trunk Paint

*Correct Speckles in Paint
Finishes Trunk Correctly
Spray Can Allows Easy Access
to Hard to Reach Spaces*



TP642(Black and aqua).....	\$14.00 ea.
TP642G(White and gray).....	\$14.00 ea.

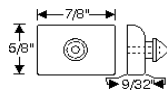
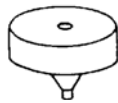
Trunk Bumpers

1961-1972 All.

TB495	\$2.75 ea.
-------	-------	------------

1961-1964 All Wagons. Bumper and tailgate latch striker.

TB598	\$3.00 ea.
-------	-------	------------



1961-1975 Accessory Trunk Mats



Reproduction of Genuine buick accessory. Features black or saddle with white Tri-Shield logo. Show quality. Licensed and approved by GM. Fits all models.

TM615(Black and White).....	\$139.00 ea.
TM615S(Saddle and White).....	\$79.50 ea.

Trunk Lid Lock Mechanism

1961-1972 Special, Skylark, GS.

TL562	\$39.75
-------	-------	---------

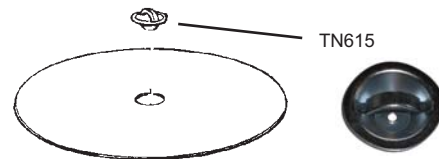


Tire Covers

*Available in Houndstooth Pattern
Hides Spare Tire
Matches Trunk Mat and Material*



CARS#	YEARS	APPLICATION	PRICE
STC647S	1964-1972	Aqua/Black 14".....	\$ 39.00
STC647L	1964-1972	Aqua/Black 15".....	\$ 39.00
STC642S	1964-1972	Gray/Black 14".....	\$ 39.00
STC642L	1964-1972	Gray/Black 15".....	\$ 39.00



Hardboard Spare Tire Lid

CARS#	YEARS	APPLICATION	PRICE
STL612A	1961-1972	Aqua/Hounds Tooth.....	\$ 20.00
STL612G	1961-1972	Aqua/Speckled.....	\$ 27.75
STB611	1961-1972	Spare Tire hold down bolt 5/16"-18 x 9 1/2"	\$11.75
TN615	1961-1972	Spare Tire hold down wing nut	\$18.00

Trunk Mats

*Precision Die Cut Rubber for Perfect Fit
Correct Houndstooth Pattern and Color
Needed for Show Points and Authenticity*

CARS#	YEARS	APPLICATION	PRICE
Gray / Black			
TM645	1964-1965	\$46.50
TM667	1966-1967	\$46.50
TM682	1968-1972	\$46.50
Aqua / Black			
TM645A	1964-1965	\$46.50
TM667A	1966-1967	\$46.50
TM682A	1968-1972	\$46.50

Trunk Tote Bag

Matching Tote Bag 8" x 18".
Custom sewn and fully zippered.



Aqua/Black	TOTEAQUA	\$29.50
Gray/Black	TOTEGRAY	\$29.50