

(15.286) **1961-1972** (15.306)

**Custom Form Molded Carpet Sets**



Our carpets are Form Press Molded to manufacturers specifications for correct fit and easy installation. All sets include matching vinyl heel pad on drivers side, molded foot wells and jute underpadding. Our carpets are made from Dorsett roll goods, the highest quality automotive carpet available today.

When ordering, please specify color number, year, model and style of car. Colors listed are "names" only and do not imply any exact shade, color or trim code that may have been originally offered. FREE samples are available by sending S.A.S.E. We strongly suggest that you receive a sample before you purchase any carpet. You may also visit our website [www.oldbuickparts.com](http://www.oldbuickparts.com) and see group 15 for a color sampling of our carpets. Sorry, no returns on custom made items.

**500 Series 80/20 Nylon Loop  
\$179.50**

**COLORS AVAILABLE:**

- C501 - Black
- C506 - GM Blue
- C508 - Turquoise
- C509 - Olive Green
- C510 - Brown
- C511 - Light Saddle
- C512 - Sky Blue
- C515 - Red
- C521 - Medium Saddle
- C522 - Lt. Blue
- C523 - Gold

**COLORS AVAILABLE:**

- C525 - Maroon
- C527 - Gray
- C540 - Midnight Blue
- C543 - Ford Tan
- C544 - Emberglow
- C546 - Lt. Oxblood
- C557 - Gun Metal Gray
- C559 - Ivy Gold
- C565 - Red
- C570 - Gold
- C571 - Fawn

**Carpet for Door Panel Bottoms**

All years and models. 8" wide. State carpet number.  
DPC610 .....\$59.00 pair

**800 Series 100% Nylon  
CUT PILE \$151.50**

**COLORS AVAILABLE:**

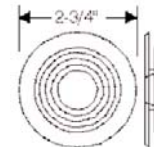
- C801 - Black
- C8019 - Medium Opal
- C802 - Blue
- C807 - Dark Gray
- C8075 - Medium Gray
- C8078 - Medium Quartz
- C810 - Brown
- C812 - Royal Blue
- C815 - Dark Red
- C8170 - Lapis Blue
- C818 - Ocean Blue
- C820 - Saddle
- C825 - Maroon
- C826 - Titanium
- C8275 - Agate
- C830 - Buckskin
- C832 - Dark Sapphire
- C8335 - Med. Neutral
- C834 - Sand
- C835 - Firethorn
- C840 - Navy Blue
- C8405 - Dark Navy
- C849 - Jade Green
- C851 - Biscuit
- C853 - Silver
- C854 - Caramel
- C865 - Mocha
- C8655 - Med. Mocha
- C868 - Med. Dark Gray
- C871 - Taupe
- C875 - Oxblood
- C8835 - Med. Beige
- C8935 - Adriatic Blue
- C8945 - Dk. Graphite
- C897 - Charcoal

**For carpet by the yard -  
add "Y" to the part  
number (i.e. C810Y)**

**Essex Premium Plush Pile  
\$175.00**

**COLORS AVAILABLE:**

- C1001 - Black
- C1024 - Med. Dark Graphite
- C1033 - Blue
- C1038 - Charcoal
- C1054 - Caramel
- C1062 - Med. Dark Flint
- C1067 - Dark Taupe
- C1076 - Prairie Tan
- C1079 - Dark Slate
- C1060 - Brown



**1936-1960 Grommet for  
dimmer Switch on carpet  
floor. 1" hole.  
SG360.....\$7.75 ea.**

# Carpet • Floor Mats • Trunk Linings (Group 15)

## Under Carpet Sound Deadener



Die cut from original style tar-based material.

**1964-1967 All.**

SD647 .....\$65.00 set

**1968-1972 All.**

SD682 .....\$65.00 set



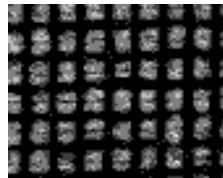
## Under Carpet Jute Padding Set

**1964-1972 All.**

JP642 .....\$38.50 set

## Sound Deadening Material

Used under floor matting, on inside of outer sheet metal panels, between trunk inner panels etc. Waffle pattern.



Heavy, black, tar type material.

SD300.....39" X 72".....\$44.75 ea.

Lighter, dark brown, more paper type.

SD301.....27" X 36".....\$25.25 ea.

## Kick Panel Insulation (14.630)



Excellent noise reduction and insulation of passenger compartment. Sold in pairs.

**1964-1967 All.**

KPI647 .....\$12.75 pr.



**1968-1972 All.**

KPI682 .....\$12.75 pr.



## Rear Seat Dividers

Die cut Fiberboard provides insulation of heat, noise, moisture and fumes. Sent UPS oversize.

**1961-1962 All.**

TD612A .....\$33.50 each

**1964-1967 All.**

TD647A .....\$25.25 each

**1968-1972 All except convertibles.**

TD682A .....\$18.75 each

**1968-1972 All convertibles.**

TD682AC .....\$18.75 each

## Rear Seat Divider Insulation

**1964-1967 All.**

TDI647A .....\$17.00 each

**1968-1972 All except convertibles.**

TDI682A .....\$17.00 each

**1968-1972 All convertibles.**

TDI682AC.....\$17.00 each

(Group 15) **1961-1975 Buick Accessory Floor Mats**



(15.292)



Our floor mats are made from original GM blueprints and design. They represent over 20 different part numbers and manufactured to apply to the following applications.

**1961 thru 1972** Special, Skylark, GS.

**1961 thru 1975** LeSabre, Wildcat, Invicta, Apollo, Centurion, Electra.

**1963 thru 1975** Riviera.

Coverage may exceed these applications.

Mats are black with white tri-shield logo. They are show quality in appearance and quality, and approved by G.M.

**1961-1975 Floor mats. Black with white logo.**

FM615S.....Front and Rear.....\$229.50 set

RM615.....Rear only.....\$41.25 set

**1961-1975 Floor mats. Saddle/Brown with white logo.**

FM615SB.....Front and Rear..... \$229.50 set

**1961-1975 Floor mats. Blue with white logo.**

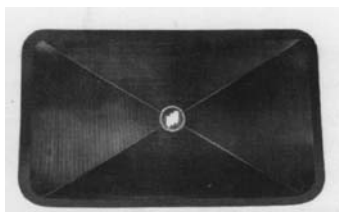
FM615SU.....Front and Rear..... \$239.50 set

**1961-1975 Floor mats. Red with white logo.**

FM615SB.....Front and Rear..... \$239.50 set

Please add 10% shipping and handling to all orders.

**Free Delivery to  
Spring and Fall Carlisle  
GS Nationals  
Buick Nationals  
Call NOW!  
908-369-3666**



**Trunk mats**

**Both black and saddle.**

**TM615.....Black .....\$139.00**

**TM615S...Saddle... \$139.00**

(15.294)